

Madison County Fair Beef Cattle Show Information



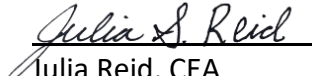
July 6, 2022

Cooperative Extension Service

Madison County
230 Duncannon Lane
Richmond, KY 40475
(859) 623-4072
Fax: (859) 624-9510
<http://extension.ca.uky.edu>

TO: Open 4-H/FFA and Open Beef Cattle Show Participants

FROM: 
Brandon Sears CEA
Agriculture & Natural Resources


Julia Reid, CEA
4-H Youth Development


Scott Darst, CEA
4-H Youth Development

RE: 2022 Madison County Beef Cattle Show Information

The Beef Cattle Show at the Madison County Fair will take place on **ONE NIGHT** and will be **Tuesday, August 2nd, 6 pm.**

Our Open 4-H/FFA, Steer/ Market Heifer Show will start at about 6:45 p.m. **The grand champion will receive \$300 and reserve champion will receive \$150.** Steers/Heifers need to be on the grounds by 5:00 p.m. **

Youth Heifers are shown in Open Classes and will receive Open Payout only**

*** Please bring your own generator if possible to run your clippers, fans, blowers, etc. We have limited electrical capacity at the arena. Many times the circuit overloads and the breakers trip.**

*** Also, please clean up bedding materials as much as you can before you leave, even if this means just raking the material up in a pile and removing the baling twine.**

THERE IS NO BEEF SHOW ENTRY FEE FOR EXHIBITORS! Fair admission is the only fee for all beef show participants!

AGAIN THIS YEAR! Premiums will be paid by check and mailed within two weeks of the show date. Cash will not be given out at the show. Make sure to fill out your exhibitor entry card correctly including phone number and use the address where you want the check mailed.

***** Please turn over for more important information on back*****

(continued from front...)

4-H/FFA Classes will show first, with the Open Beef Cattle Show beginning at approximately 7:00 pm. Premium money is as follows: 1st place, \$25; 2nd place, \$20; 3rd place, \$15; and 4th place, \$10. Best of Breed Champion, \$50, Reserve Best of Breed \$25. **Supreme Champion and Reserve Champion will receive \$300 and \$150 respectively.** Cattle should be on the grounds by 5:00 p.m. to allow for plenty of registration time prior to the show.

Directions:

From Richmond at the intersection of U.S. 25/421 (Dr. Robert Martin By-Pass and U.S. 52), take US 52 toward Irvine. The fairgrounds are 3.5 miles out US 52 on the left. The physical address 3237 Old Irvine Road, Richmond, KY 40475. Signs are posted.

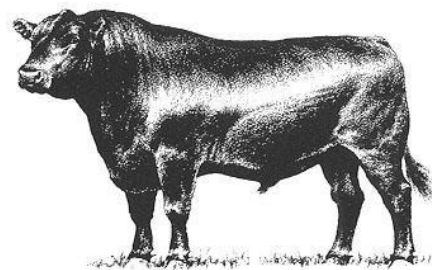
*** Don't forget that we have a wash rack facility at the fairgrounds for you to use.**

Enclosed is a list of classes for this year's show. Please review carefully!

I hope you can attend the Madison County Beef Cattle Show on Tuesday August 2nd. We appreciate and thank you for your participation!

If you have any questions, please give us a call at 859-623-4072.

(The Judge this year is Jeff Harrod)



sls

Enclosure

Cooperative Extension Service
Agriculture and Natural Resources
Family and Consumer Sciences
4-H Youth Development
Community and Economic Development

Educational programs of Kentucky Cooperative Extension serve all people regardless of economic or social status and will not discriminate on the basis of race, color, ethnic origin, national origin, creed, religion, political belief, sex, sexual orientation, gender identity, gender expression, pregnancy, marital status, genetic information, age, veteran status, or physical or mental disability. University of Kentucky, Kentucky State University, U.S. Department of Agriculture, and Kentucky Counties, Cooperating.
LEXINGTON, KY 40546



Disabilities
accommodated
with prior notification.

Madison County Beef Cattle Show Madison County Fair Embry Curry Arena Tuesday August 2, 2022

Beef Cattle Show starts at 6 pm

Fair Admission at gate is your show entry fee

Open 4-H & FFA Classes

Participants will receive ribbons based on Danish System (Blue, Red, and White). All novice participants will receive recognition ribbons.

Class #	Class Name	Payout
1 Open	Open Novice Showmanship (Beef or Dairy) Youth Ages 5-8	All Entries Receive \$5
2 Open	Open Senior Showmanship Youth Ages 14-19	1 st : \$20 2 nd :\$15 3 rd :\$10 4 th :\$5
3 4H&FFA together	Madison Co. Senior Showmanship Youth Ages 14-19	1 st : \$20 2 nd :\$15 3 rd :\$10 4 th :\$5
4 Open	Open Junior Showmanship Youth Ages 9-13	1 st : \$20 2 nd :\$15 3 rd :\$10 4 th :\$5
5 4H&FFA together	Madison Co. Junior Showmanship Youth Ages 9-13	1 st : \$20 2 nd :\$15 3 rd :\$10 4 th :\$5
6 4H&FFA together	Light Weight Steer/Market Heifer	1 st : \$50 2 nd :\$20 3 rd :\$10
7 4H&FFA together	Medium Weight Steer/Market Heifer	1 st : \$50 2 nd :\$20 3 rd :\$10
8 4H&FFA together	Heavy Weight Steer/Market Heifer	1 st : \$50 2 nd :\$20 3 rd :\$10
9 4H&FFA together	Grand Champion Steer/Market Heifer	\$300 Champion \$150 Reserve
10 4H&FFA together	Madison Co. Born and Raised Steer/Market Heifer	\$50 Champion \$25 Reserve
11 4H&FFA together	Novice Heifer Class: All Novice Heifers (breeding) Youth Ages 5-8	All entries receive \$5
12 4H&FFA together	Madison Co. Born and Raised Heifer (breeding)	\$50 Champion \$25 Reserve
NOTE:	Youth can show in Open Classes but will receive open payout & ribbons only!	1st: \$25 2nd: \$20 3rd:\$15 4th:\$10

4-H/FFA Classes: Show Rules

1. The 2022 KY State Fair Catalog 4-H/FFA Youth Livestock Rules will serve as guidance if needed.
2. Health requirements. See 2022 KY State Fair Catalog under 4-H/FFA Youth Livestock Rules. Must have an official health certificate.
3. To enter, a child must be a 4-H/FFA Member enrolled in a beef project and have completed at least 6 hours educational training.
4. The animal must be owned by, and under the direct care of, the exhibitor on or before March 31, 2022.
5. All steers and commercial heifers must be KUIP tagged no later than March 31, 2022 to be eligible to show in the Madison County Fair.
6. Exhibitors may enter 2 steers or commercial heifers into the Madison County Steer/Heifer Show.
7. All steers/heifers will be shown by weight and will be broken into appropriate classes. Calves must weigh at least 850 pounds. Novice Showmen are exempt from weight requirements.
8. Heifer registration papers must be in the child's name by June 1, 2022 in accordance to KY State Fair Rules.
9. Madison County Born and Raised Heifer Class: Animals entered into this class must be the project animal of a Madison County youth and be born and raised on a Madison County Farm.
10. **Any youth exhibitors showing in open classes receive open payout only. They are not eligible for both a youth payment and an open show payment.**

Open Beef Cattle Classes

Payout

Top four places are awarded 1st-\$25, 2nd-\$20, 3rd-\$15, and 4th-\$10
Best of Breed \$50 and Reserve Best of Breed \$25
Supreme Champions \$300 and Reserve Supreme Champions \$150

Breakdown of Ages for Class Eligibility:

1. Jr. Calf -born on January 1, 2022 or after
2. Sr. Calf -born on or between September 1 and December 31, 2021
3. Summer Yearling -born on or between May 1 and August 31, 2021
4. Jr. Yearling -born on or between January 1 and April 30, 2021
5. Sr. Yearling -born on or between September 1 and December 31, 2020
6. Cow/Calf Classes -cows 2 years old and older with a nursing calf at side.
7. Supreme Champion Female -Best of Breed winners make up this class.
8. Reserve Champion Female -Best of Breed winners make up this class with the second place female selected from class in which the Supreme Champion was selected.

Open Heifer Classes

	Angus	Charolais	Hereford	Saler	Simmental	% Simmental	AOB & Crossbreeds
Junior Calf	0	1	2	3	4	5	6
Senior Calf	10	11	12	13	14	15	16
Summer Yearling	20	21	22	23	24	25	26
Junior Yearling	30	31	32	33	34	35	36
Senior Yearling	40	41	42	43	44	45	46
Cow/Calf	50	51	52	53	54	55	56
Best Of Breed	60	61	62	63	64	65	66

Supreme and Reserve Champion Female: Best of Breed winners make up this class with the second place female selected from class in which the Supreme Champion was selected.

Note: If 8 or more of any breed are present the show committee will add a class if it is not already listed, otherwise those cattle will show in AOB & Crossbreeds

Open Bull Classes

	Angus	Charolais	Hereford	Saler	Simmental	% Simmental	AOB & Crossbreeds
Junior Calf	0	1	2	3	4	5	6
Senior Calf	10	11	12	13	14	15	16
Summer Yearling	20	21	22	23	24	25	26
Junior Yearling	30	31	32	33	34	35	36
Senior Yearling	40	41	42	43	44	45	46
Best Of Breed	50	51	52	53	54	55	56

Supreme and Reserve Champion Bull: Best of Breed winners make up this class with the second place bull selected from class in which the Supreme Champion was selected.

Note: If 8 or more of any breed are present the show committee will add a class if it is not already listed, otherwise those cattle will show in AOB & Crossbreeds

Call the Madison County Extension Office at 859-623-4072 with questions.